

# 核能研究所

報告編號: NL1020808-1  
2013/12/24 REV-2



## 纖維酒精驗證廠設計報告

- I. 系統流程設計圖
- II. 儀表管線設計圖



豐映科技股份有限公司  
RESI CORPORATION  
<http://www.resi.com.tw>

# 行政院原子能委員會核能研究所

## 纖維酒精驗證廠

### 系統流程圖

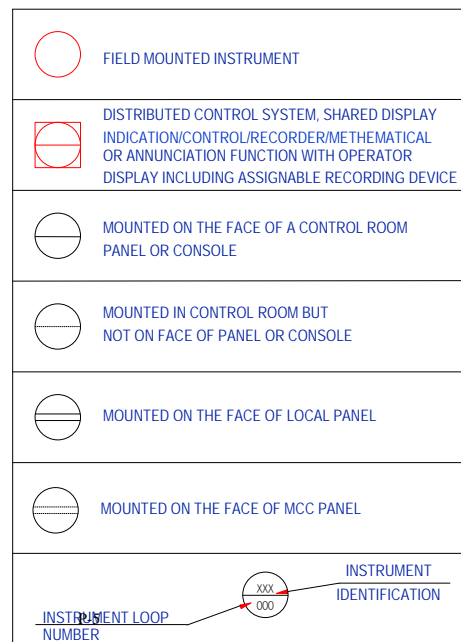
豐映科技股份有限公司

RESI 豐映科技股份有限公司

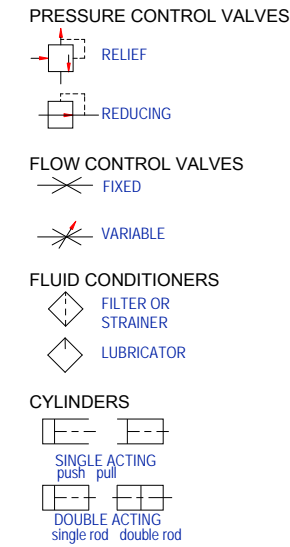


設計	黃承榮	繪圖	許智凱	大小 A3	FSCM 編號 核研所30TPD纖維酒精驗證廠流 程圖2013 12 25. VSD	核能研究所纖維酒精驗證廠 系統流程圖	修訂 1							
核可設計		審定	張榮興	比例	繪圖編號	NS1020808-PID-COVER	工作表			區域	修訂	描述	日期	批准

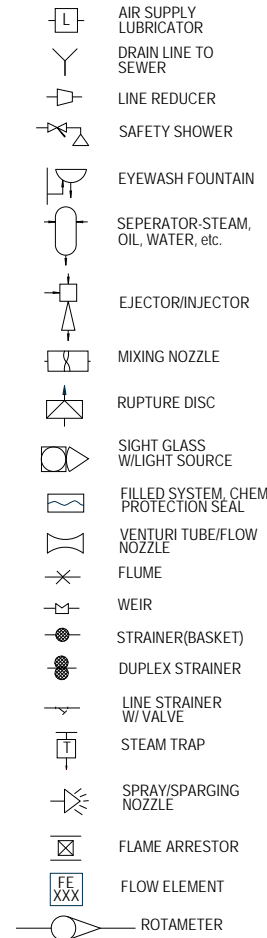
GENERAL INSTRUMENTATION SYMBOLS



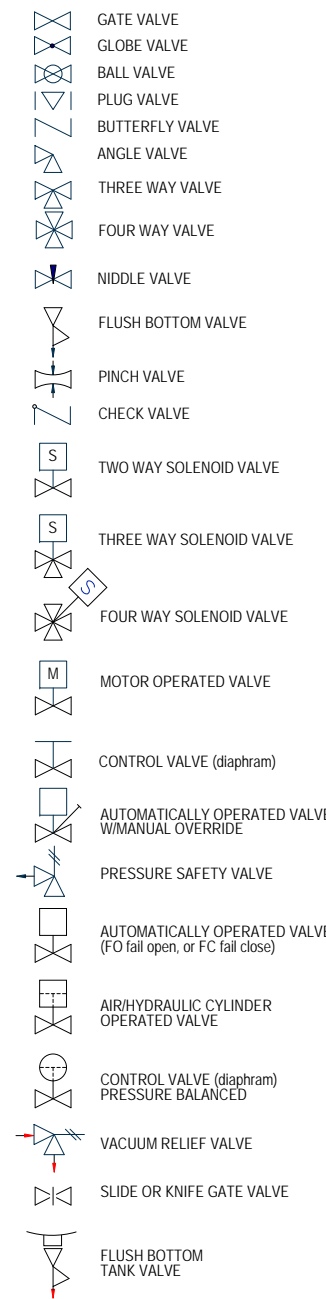
FLUID POWER SYMBOLS



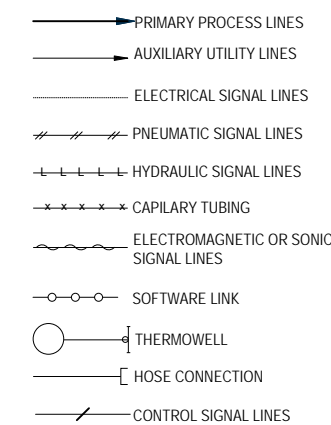
PIPELINE ELEMENTS



VALVES



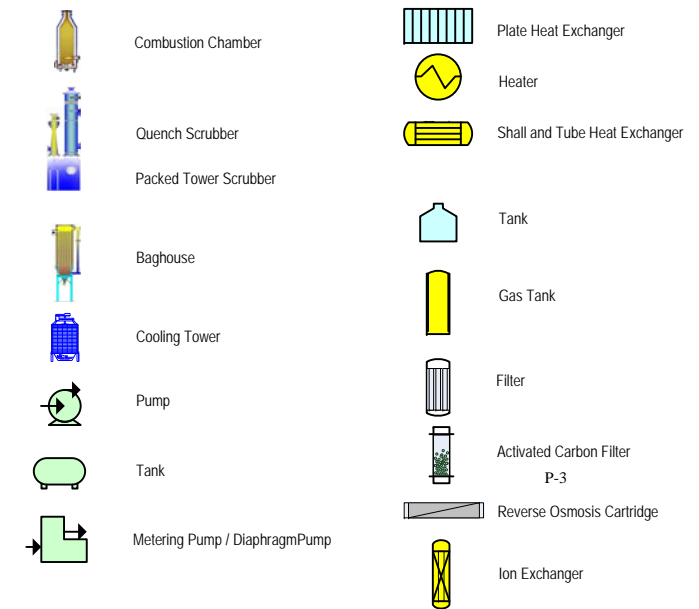
PIPE & TUBING



GENERAL NOTES

- ENGINEERING FLOW DIAGRAMS DO NOT SHOW HIGH POINT VENTS, LOW POINT DRAINS, LOW POINT TRAPS, INSTRUMENT BLOCK VALVES, ETC. REQUIREMENTS FOR THESE APPEAR IN THE SPECIFICATIONS, ONLY PROCESS RELATED VENTS, DRAINS, TRAPS, ETC. ARE SHOWN
- DRAINS, VENTS, AND SAMPLE CONNECTIONS SHALL BE 1/4" UNLESS OTHERWISE NOTED
- THE ENGINEERING FLOW DIAGRAMS SHOULD BE READ IN CONJUNCTION WITH THE RELEVANT INSTRUMENT INTERLOCK DIAGRAMS AND SKETCHES.

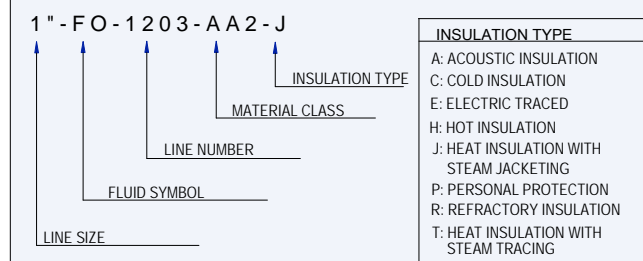
EQUIPMENT SYMBOLS



INSTRUMENT NOMENCLATURE

FIRST LETTER	MEASURED OR INITIATING VARIABLE	MODIFIER	SUCCEEDING LETTERS		
			READOUT OR PASSIVE FUNCTION	OUTPUT FUNCTION	MODIFIER
A	ANALYSIS		ALARM		
B	BURNER, FURNACE		USER'S CHOICE	USER'S CHOICE	USER'S CHOICE
C	CONDUCTIVITY (electrical)			CONTROL	
D	DENSITY OR SPECIFIC GRAVITY	DIFFERENTIAL			
E	VOLTAGE (emf)		SENSOR (PRIMARY ELEMENT)		
F	FLOW RATE	RATIO (fraction)			
G	GAGING		GLASS		
H	HAND				HIGH
I	CURRENT (elect.)		INDICATE		
J	POWER	SCAN			
K	TIME OR TIME SCHEDULE	TIME RATE OF CHANGE		CONTROL STATION	
L	LEVEL		LIGHT		LOW
M	MOISTURE OR HUMIDITY	MOMENTARY			MIDDLE, INTERMEDIATE
N	USER'S CHOICE		USER'S CHOICE	USER'S CHOICE	USER'S CHOICE
O	USER'S CHOICE		ORIFICE OR RESTRICTION		
P	PRESSURE OR VACUUM		POINT (TEST) CONNECTION		
Q	QUANTITY	INTEGRATE, TOTALIZE			
R	RADIATION		RECORD		
S	SPEED, FREQUENCY	SAFETY			SWITCH
T	TEMPERATURE			TRANSMIT	
U	MULTIVARIABLE		MULTIFUNCTION	MULTIFUNCTION	MULTIFUNCTION
V	VIBRATION, MECHANICAL ANALYSIS			VALVE, DAMPER, LOUVER	
W	WEIGHT, FORCE		WELL		
X	UNCLASSIFIED	X AXIS	IGNITION	UNCLASSIFIED	UNCLASSIFIED
Y	EVENT, STATE OR PRESENCE	Y AXIS		RELAY, COMPUTE, CONVERT	
Z	POSITION, DIMENSION	Z AXIS		DRIVER, ACTUATOR, UNCLASSIFIED FINAL CONTROL ELEMENT	

LINE NOMENCLATURE



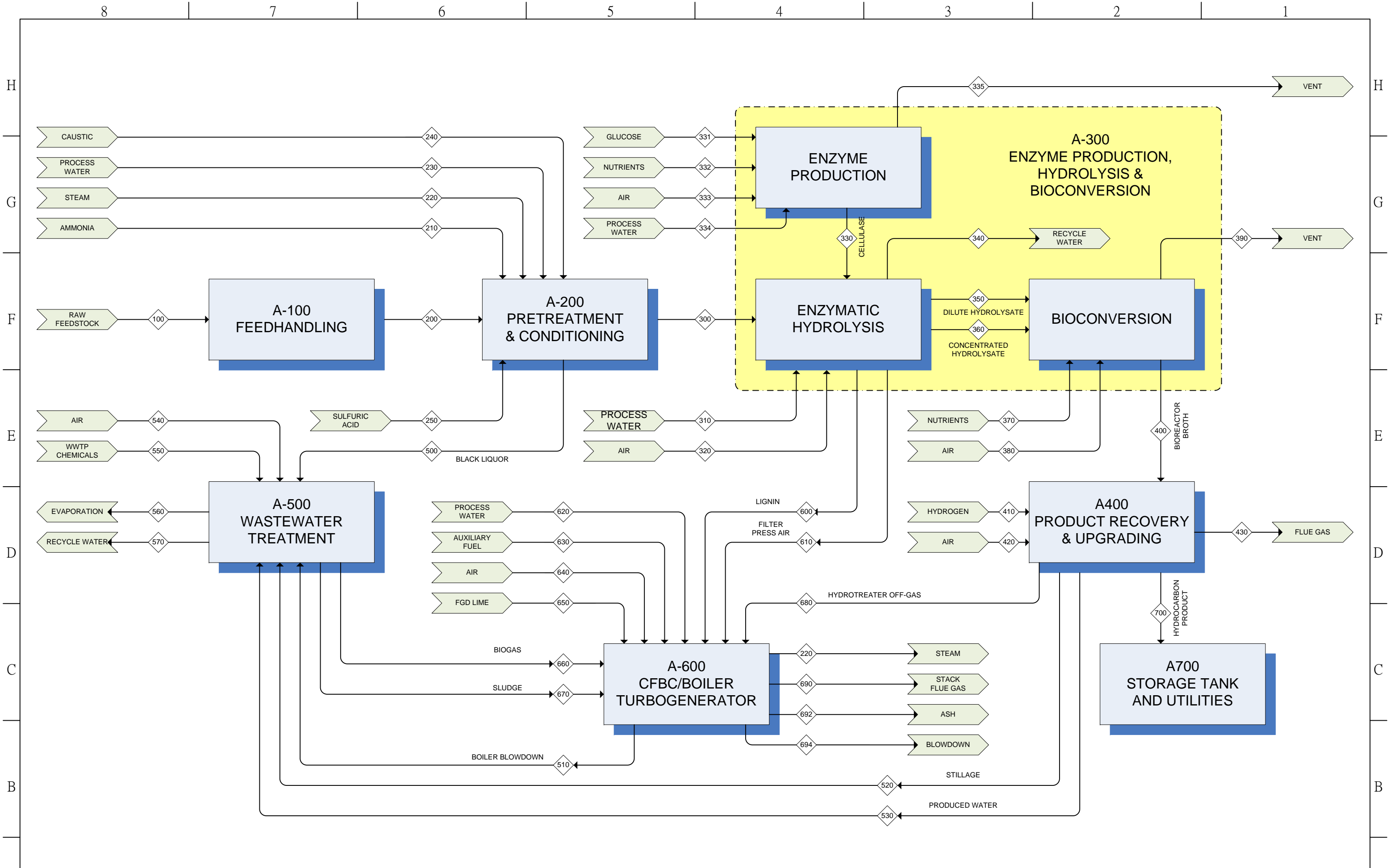
FLUID SYMBOL FOR LINE SERVICE

SERVICE SYSTEM	FLUID	SYMBOL
AIR SYSTEM	INSTRUMENT AIR PLANT AIR	IA PA
BLOWDOWN AND PUMPOUT	INTERMITTENT BLOWDOWN CONTINUOUS BLOWDOWN	BB CB
STEAM SYSTEM	STEAM	ST
GAS SYSTEM	NATURAL GAS OR LPG	GG
	NITROGEN	NG
	FLUE GAS	FG
	OXYGEN	OG
	SynGas ARGON GAS	SG AG
WATER SYSTEM	DEAERATED BOILER FEED WATER	BW
	COOLING WATER	CW
	TAP WATER	TW
	PROCESS WATER	PW
	FIRE WATER	FW
	DEIONIZED WATER INDUSTRY WATER	DW UW
CHEMICAL	CAUSTIC CHEMICAL	CL IL

RESI 豐映科技股份有限公司



設計	黃承榮	繪圖	許智凱	大小	A3	FSCM 編號	核研所30TPD纖維酒精驗證廠 程圖2013 12 25. VSD	核能研究所纖維酒精驗證廠 流程圖符號表	修訂	1	區域	修訂	描述	日期	批准
核可設計	審定	張榮興	比例	繪圖編號	NS1020808-PFD-00	工作表			修訂						



RESI 豐映科技股份有限公司

設計 黃承榮 繪圖 許智凱  
 核可設計 審定 張榮興

大小 A3  
 FSCM 編號  
 核研所30TPD纖維酒精驗證廠流程圖2013  
 12.25.VSD

核能研究所纖維酒精驗證廠  
 系統方塊流程圖

比例 A100-01  
 工作表

修訂 1	區域	修訂	描述	日期	批准
			修訂		Print: 2013-12-25